

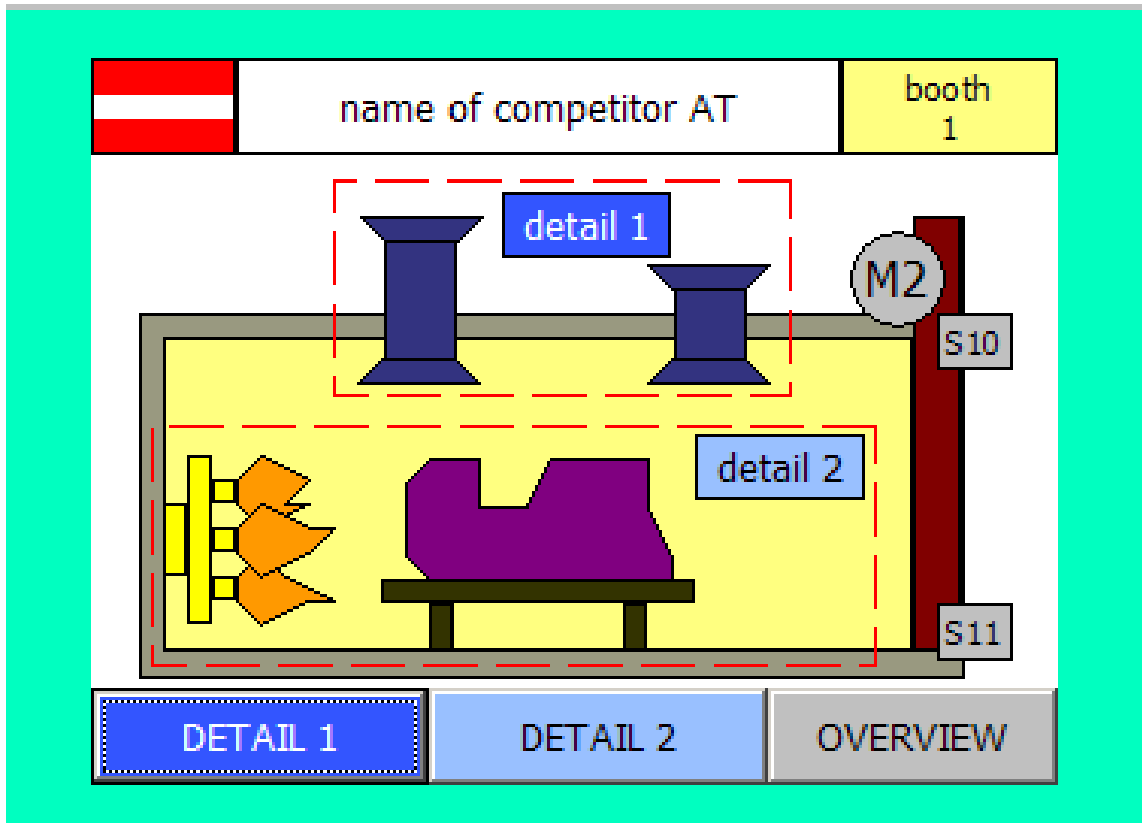
Test Project – Industrial Control

WSC2011_TP19_AT_pre_EN

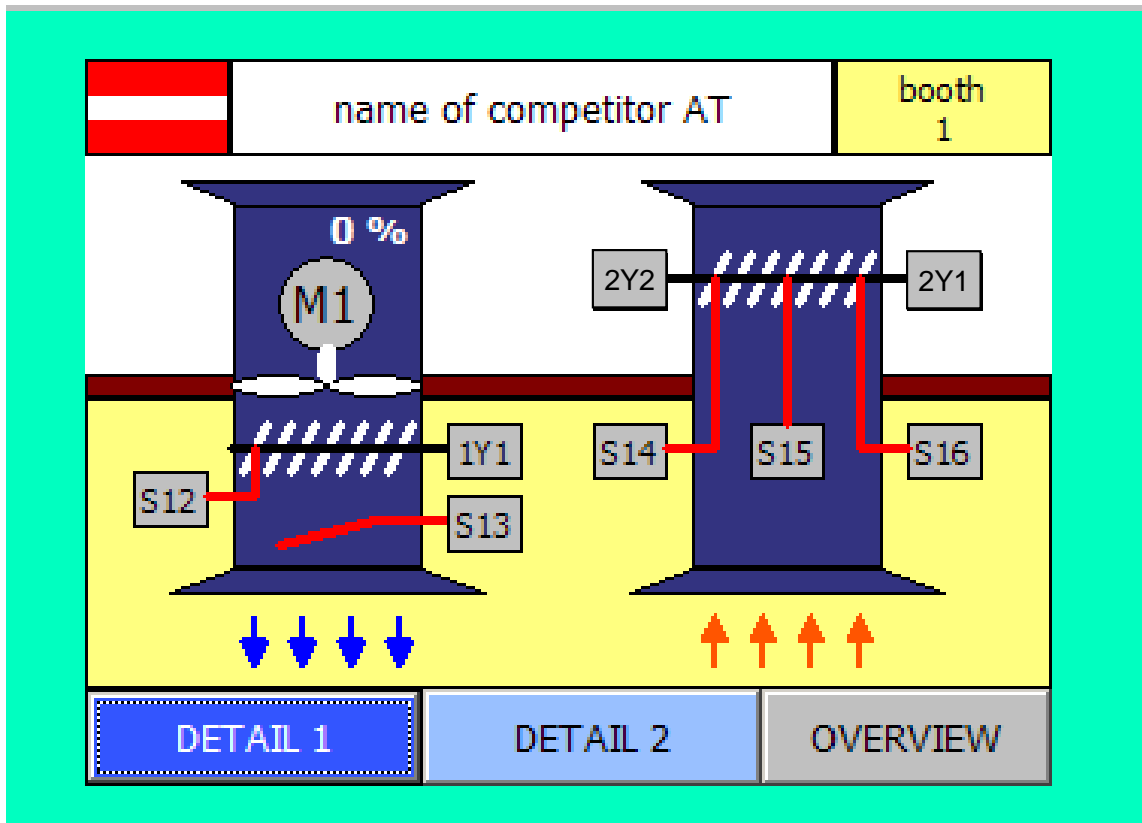
MAIN PROJECT

OP – Function Description

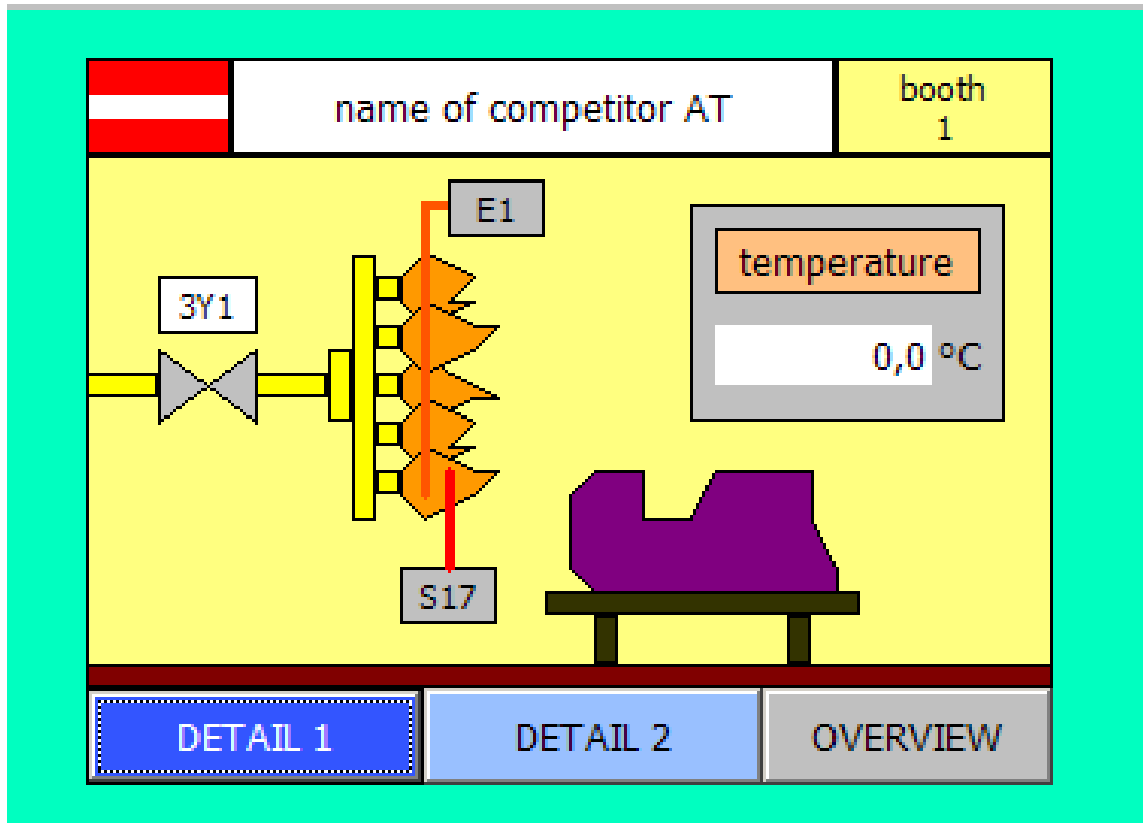
SCREEN: MANUAL MODE- OVERVIEW



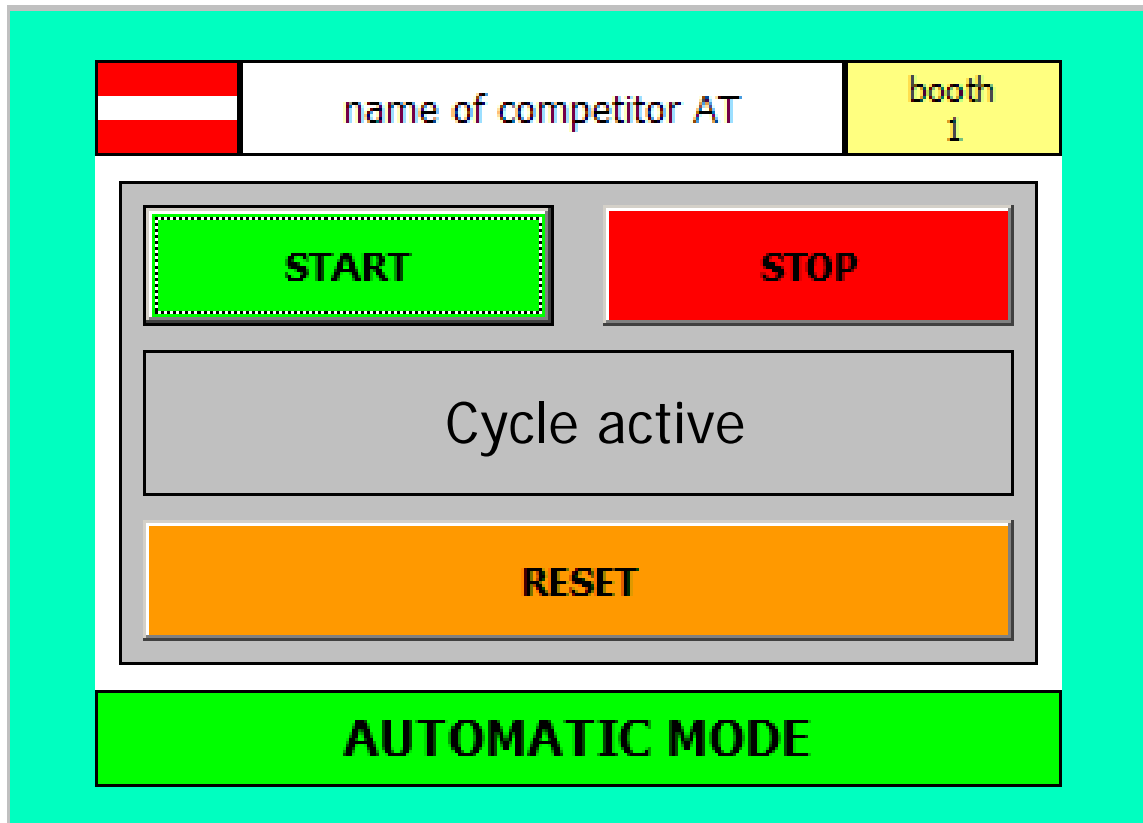
SCREEN: MANUAL_MODE- DETAIL 1



SCREEN: MANUAL MODE- DETAIL 2

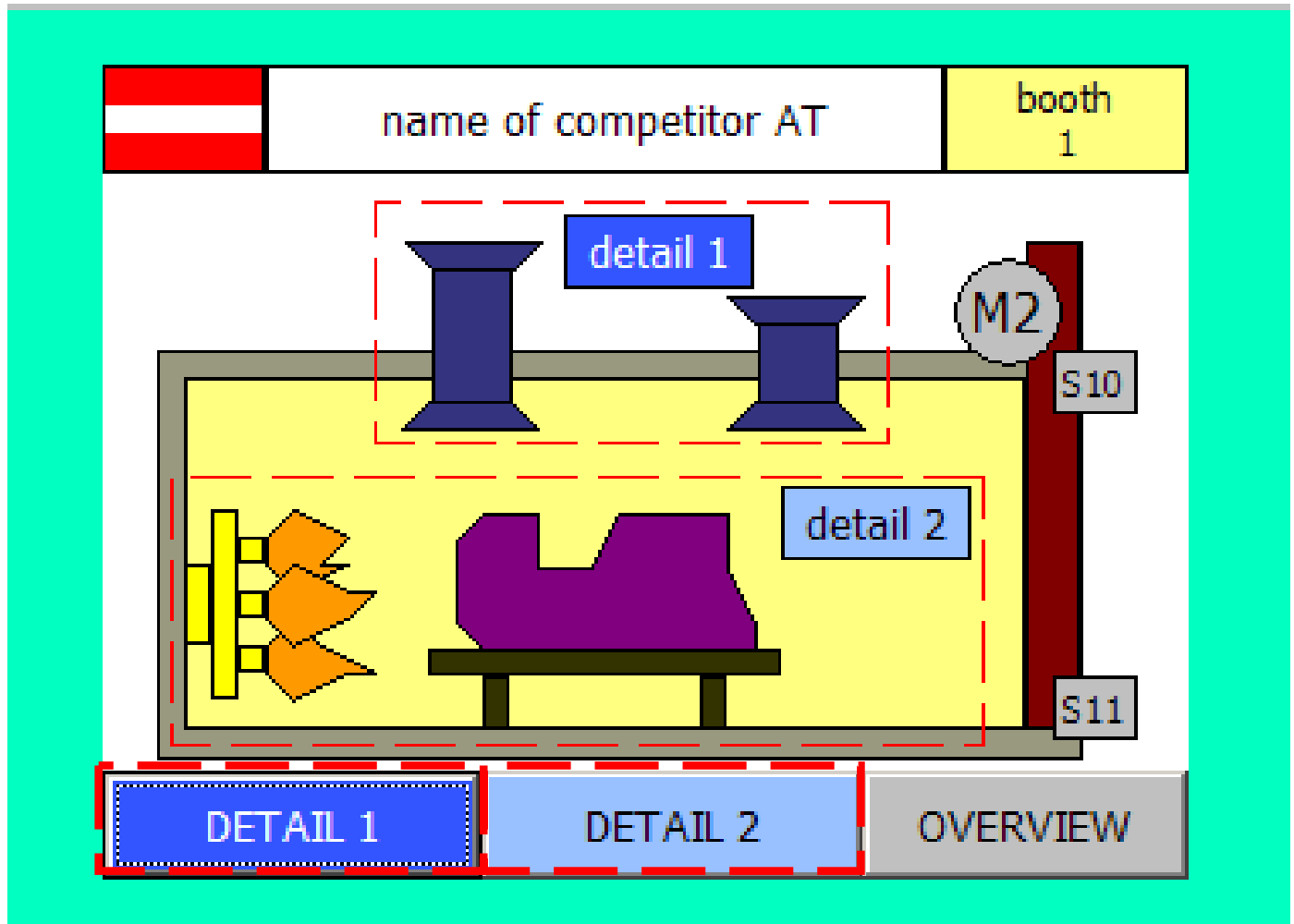


SCREEN: AUTOMATIC MODE



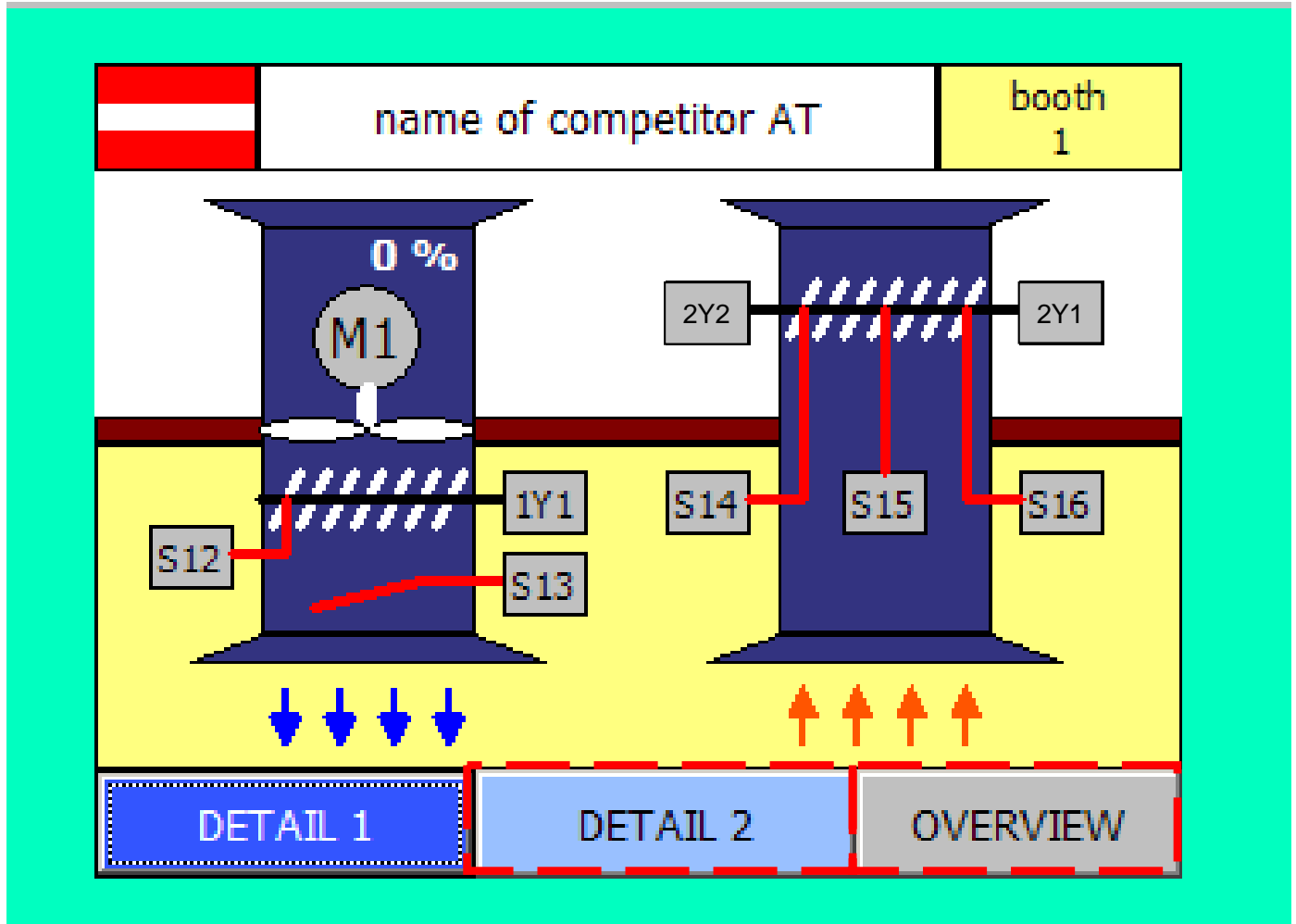
Symbol	Typ	Comment	in use
Start	BOOL	Operator Panel - Pushbutton "NO"	write
Stop	BOOL	Operator Panel - Pushbutton "NO"	write
Reset	BOOL	Operator Panel - Pushbutton "NO"	write
cycle_active	BOOL	PLC - Variable	read only
error_actice	BOOL	PLC - Variable	read only
motor_2_on	BOOL	PLC - Variable	read only
speed_M1	REAL	PLC - Variable	read only
temperature	REAL	PLC - Variable	read only
S10	BOOL	PLC - Input 0	read only
S11	BOOL	PLC - Input 1	read only
S12	BOOL	PLC - Input 2	read only
S13	BOOL	PLC - Input 3	read only
S14	BOOL	PLC - Input 4	read only
S15	BOOL	PLC - Input 5	read only
S16	BOOL	PLC - Input 6	read only
S17	BOOL	PLC - Input 7	read only
DI0	BOOL	PLC - Output 2	read only
1Y1	BOOL	PLC - Output 3	read only
2Y1	BOOL	PLC - Output 4	read only
2Y2	BOOL	PLC - Output 5	read only
E1	BOOL	PLC - Output 6	read only
3Y1	BOOL	PLC - Output 7	read only

SCREEN: MANUAL MODE- OVERVIEW



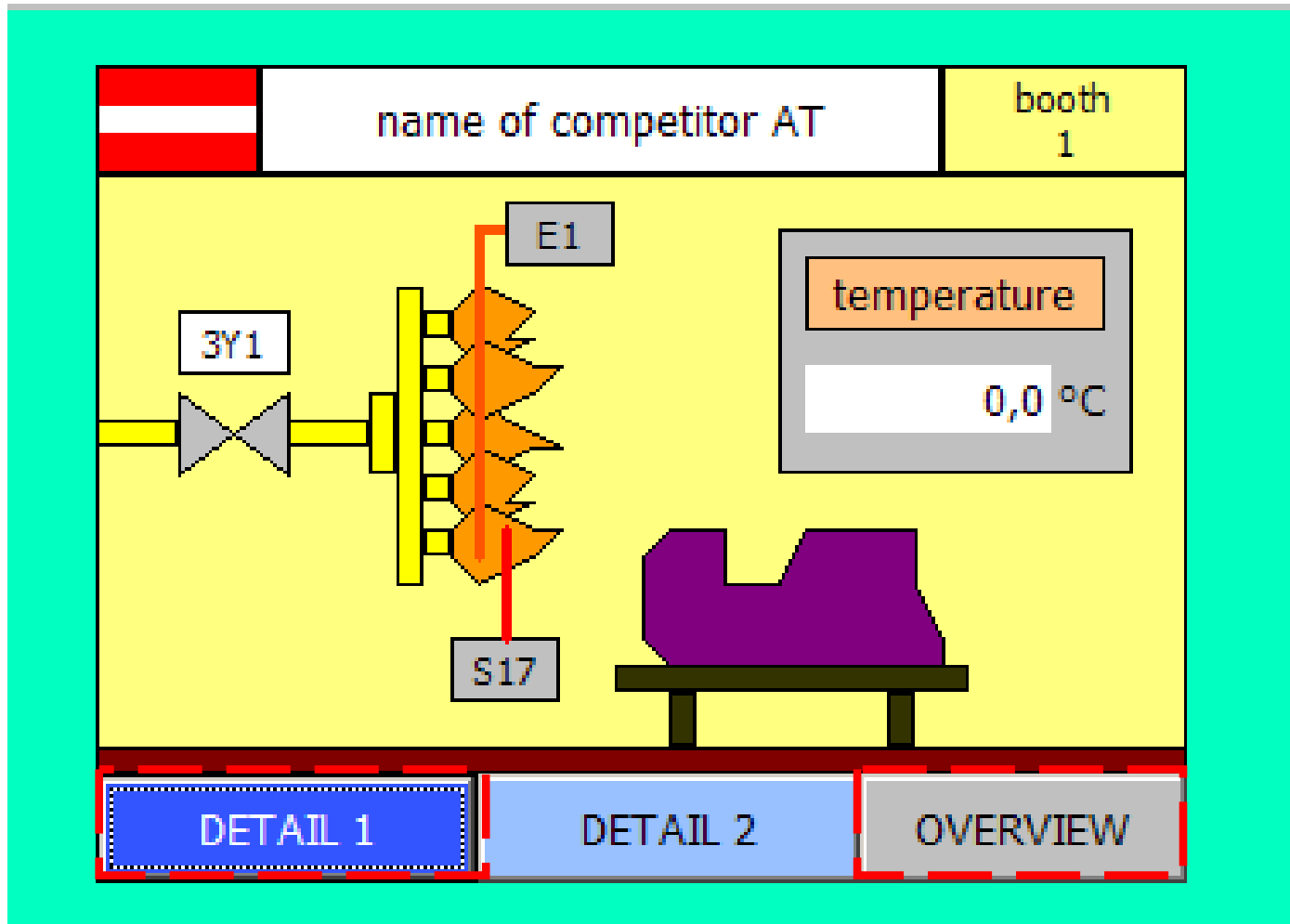
Button “DETAIL 1 “ : change to screen “MANUAL MODE- DETAIL 1“

Button “DETAIL 2 “ : change to screen “MANUAL MODE- DETAIL 2“



Button "DETAIL 2" : change to screen "MANUAL MODE- DETAIL 2"

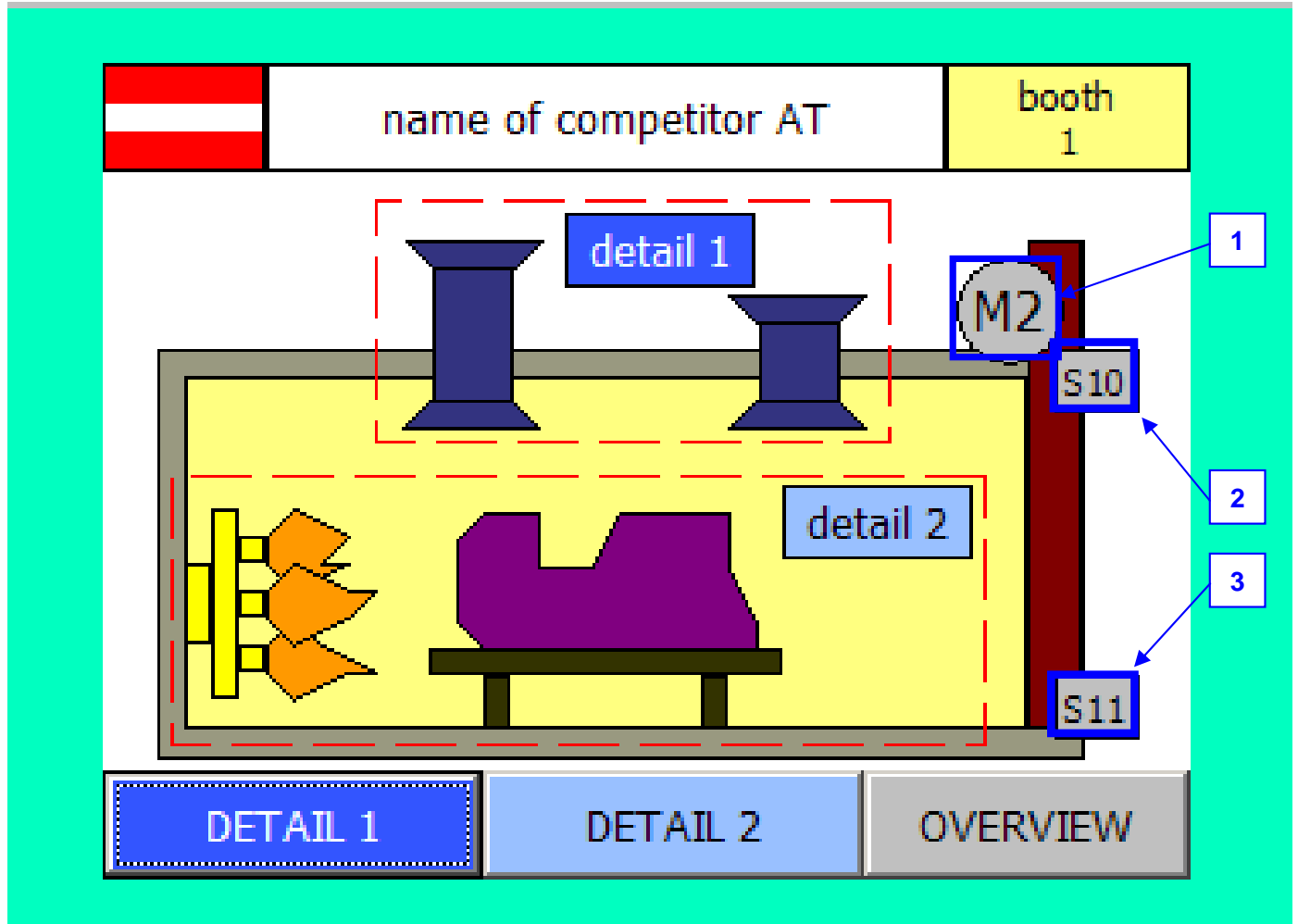
Button "OVERVIEW" : change to screen "MANUAL MODE- OVERVIEW"



Button "DETAIL 1" : change to screen "MANUAL MODE- DETAIL 1"

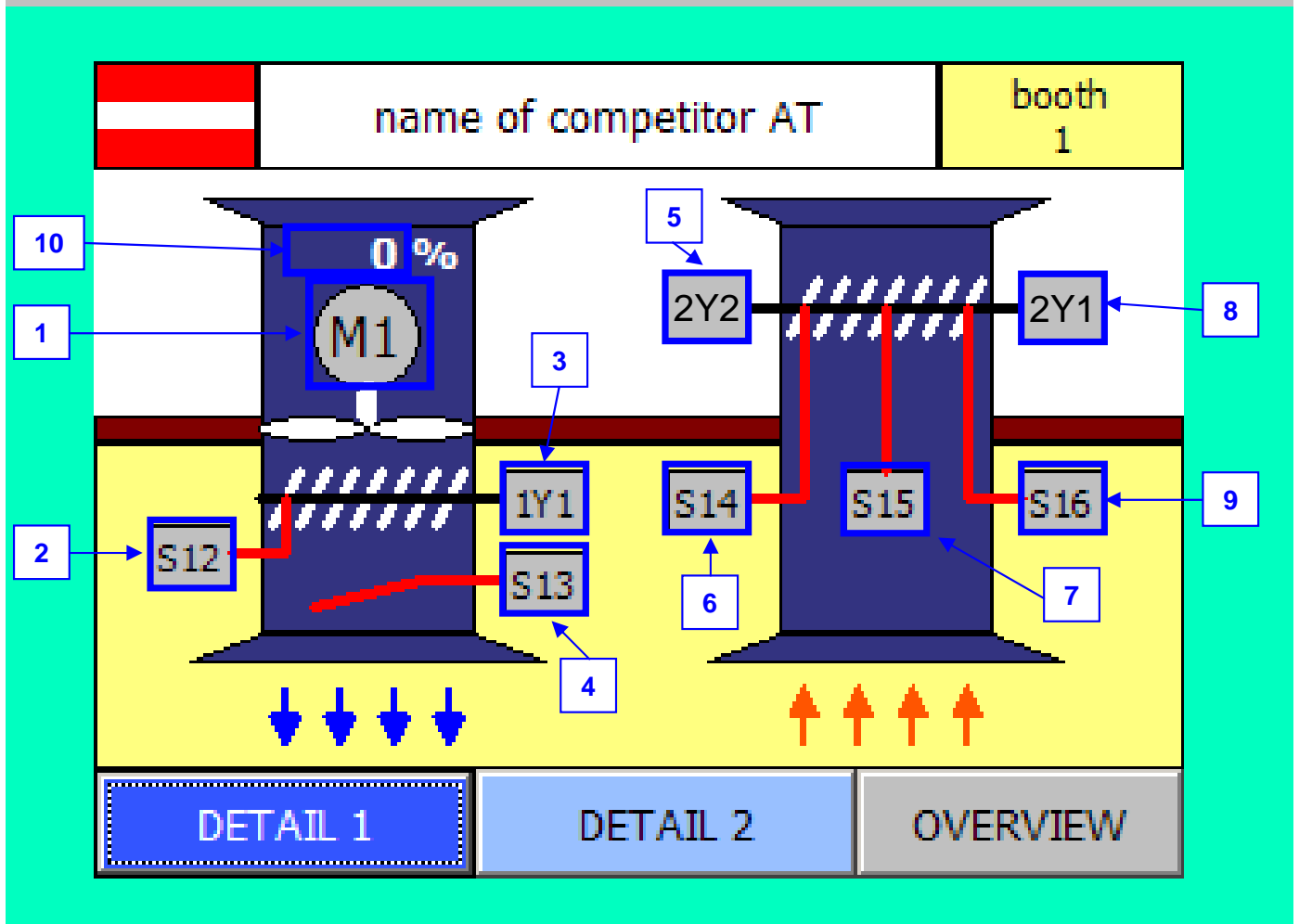
Button "OVERVIEW" : change to screen "MANUAL MODE- OVERVIEW"

SCREEN: MANUAL MODE- OVERVIEW

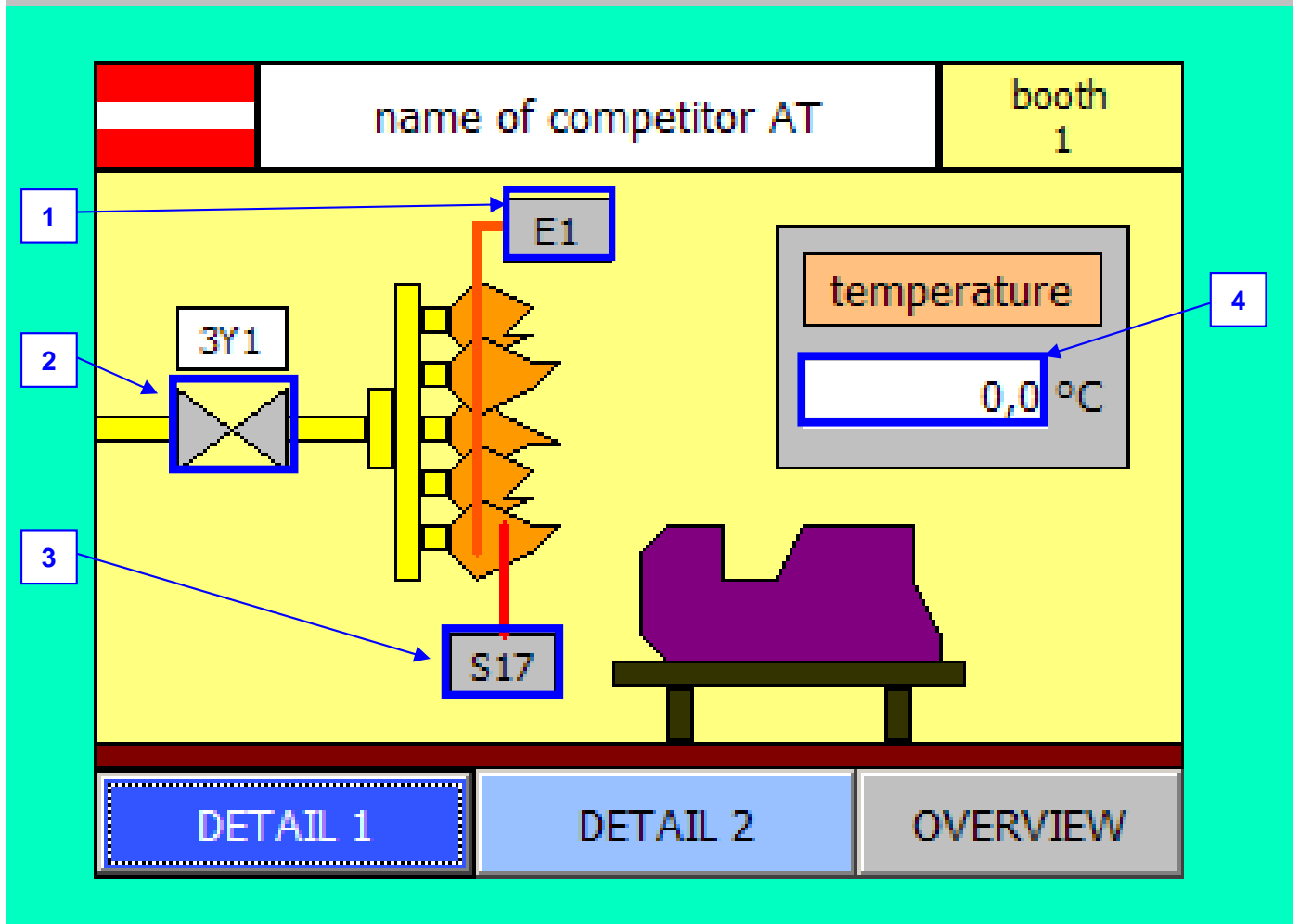


1:	Variable "motor_2_on"	}	background control actuated = GREEN not actuated = GRAY
2:	Variable "S10"		
3:	Variable "S11"		

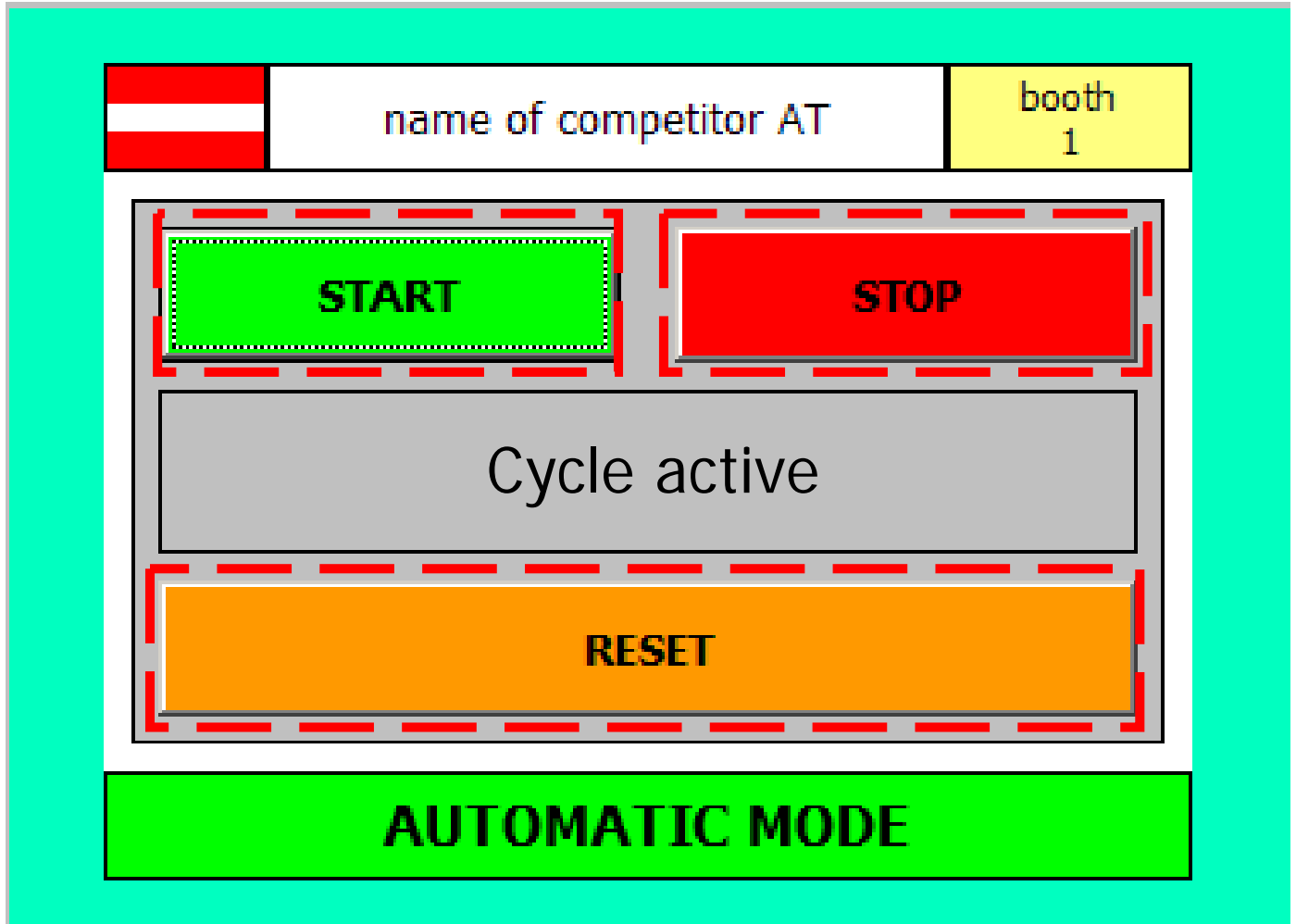
SCREEN: MANUAL MODE- DETAIL 1



1:	Variable "DI0"	} background control actuated = GREEN not actuated = GRAY
2:	Variable "S12"	
3:	Variable "1Y1"	
4:	Variable "S13"	
5:	Variable "2Y2"	
6:	Variable "S14"	
7:	Variable "S15"	
8:	Variable "2Y1"	
9:	Variable "S16"	
10:	Variable "speed_M1"	background = TRANSPARENT text = WHITE

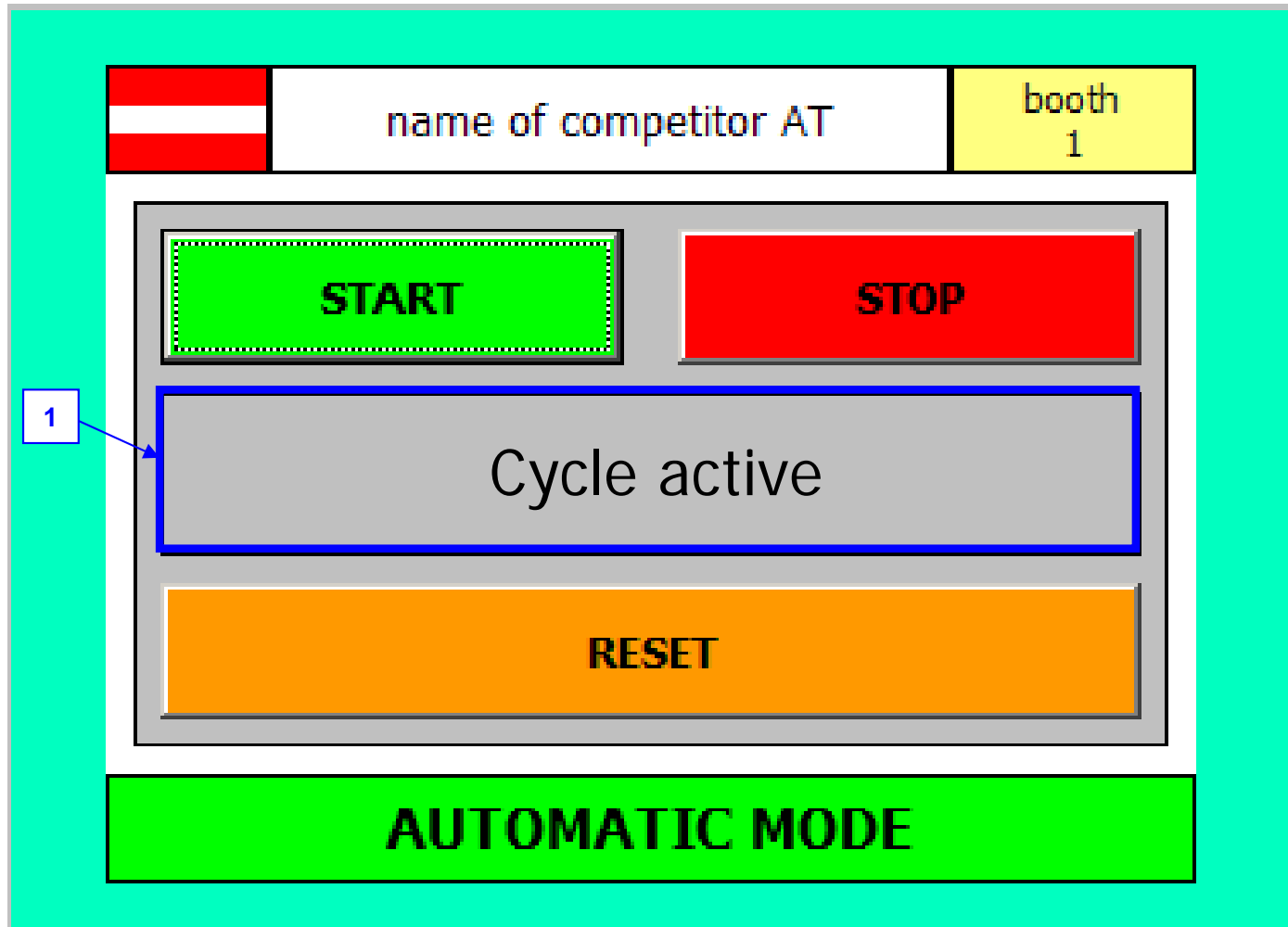


1:	Variable "E1"	}	background control actuated = GREEN not actuated = GRAY
2:	Variable "3Y1"		
3:	Variable "S17"		
4:	Variable "temperature"		background = WHITE text = BLACK



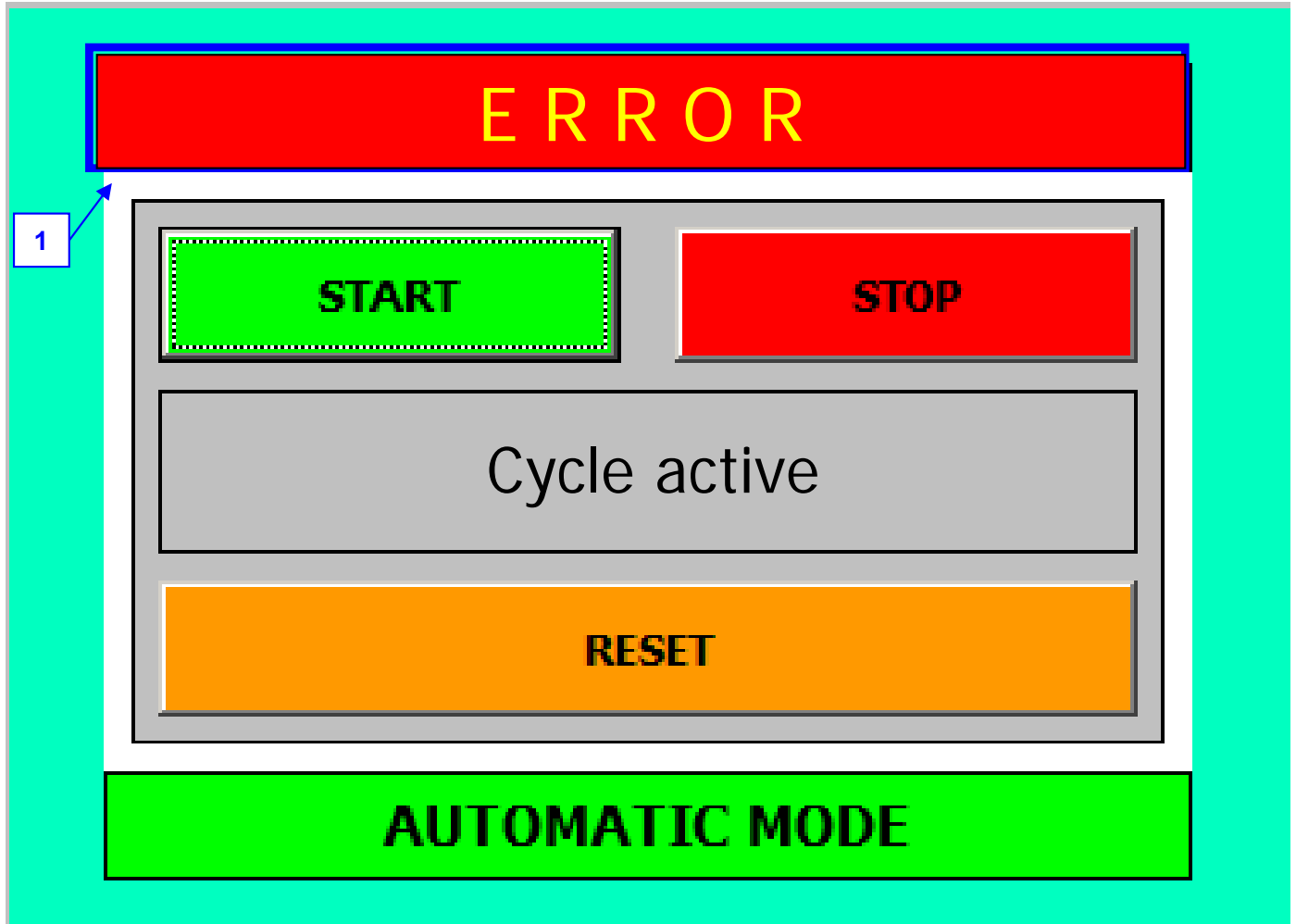
Button " START " :	Variable "Start"
Button " STOP " :	Variable "Stop"
Button " RESET " :	Variable "Reset"

SCREEN: AUTOMATIC MODE



1: Variable "cycle_active" **background control**
actuated = GREEN
not actuated = GRAY

ON EACH SCREEN



1:	Variable "error_active"	visible control actuated = visible not actuated = not visible background control actuated = flicker RED / YELLOW
----	-------------------------	--

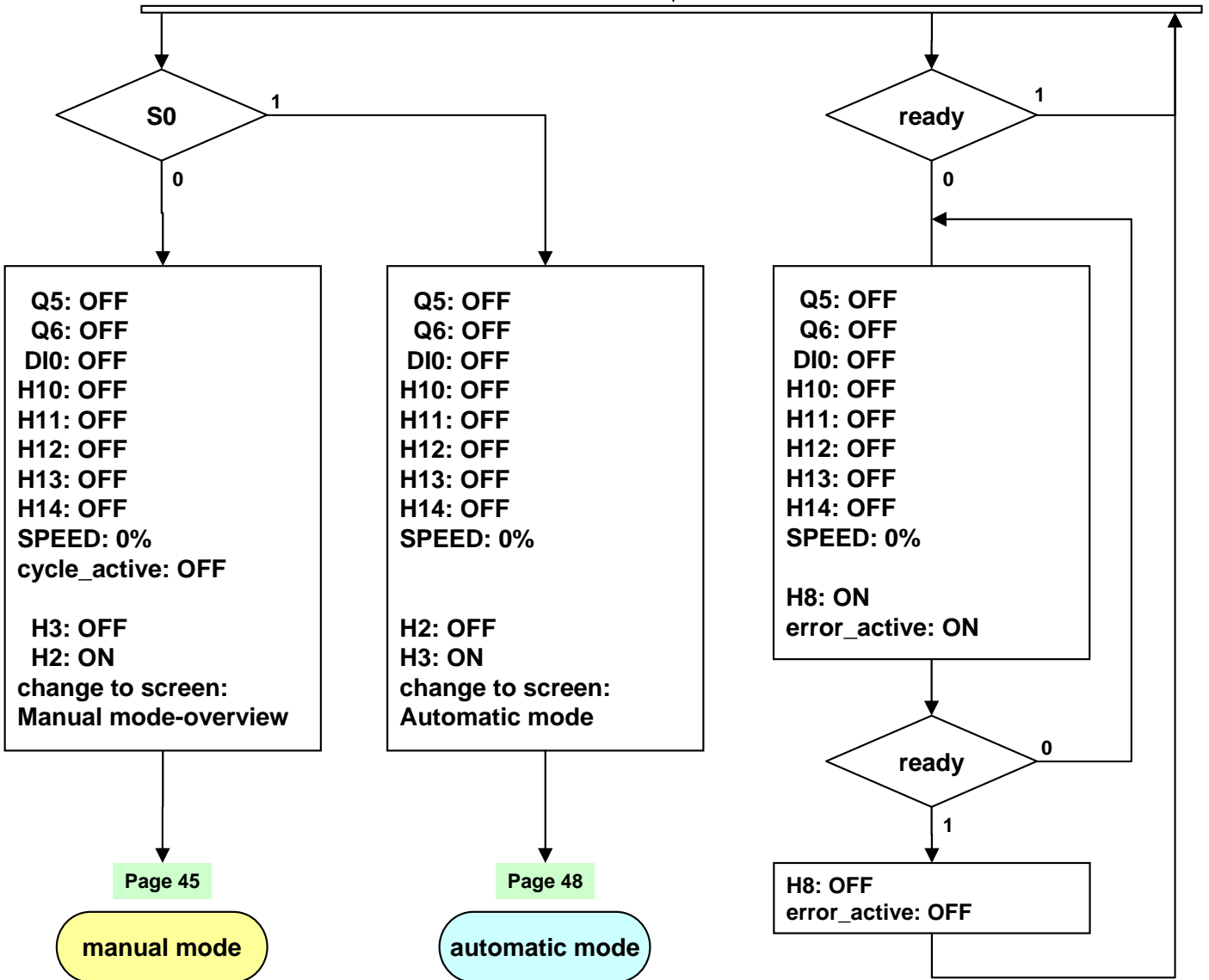
Test Project – Industrial Control

WSC2011_TP19_AT_pre_EN

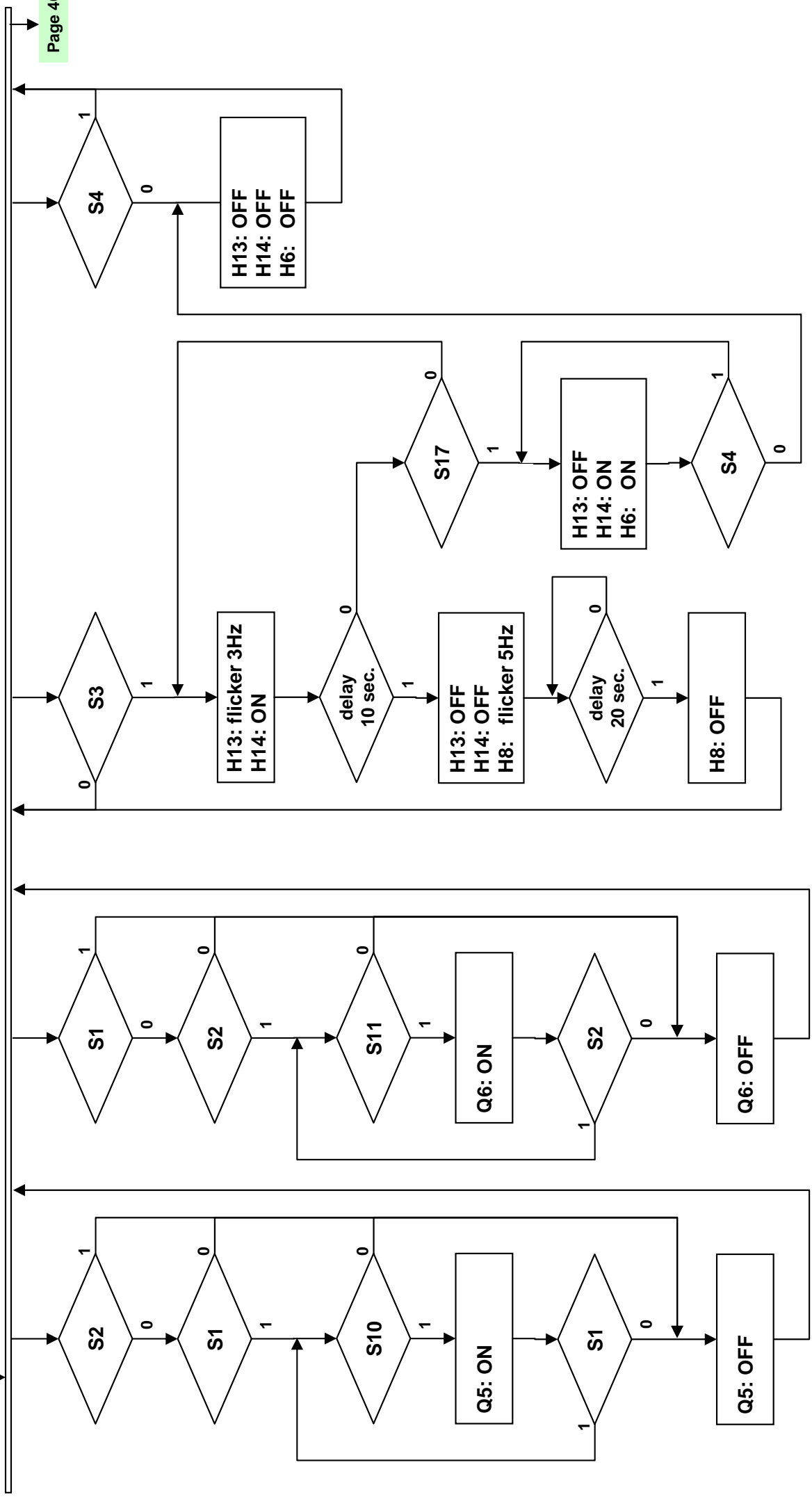
MAIN PROJECT

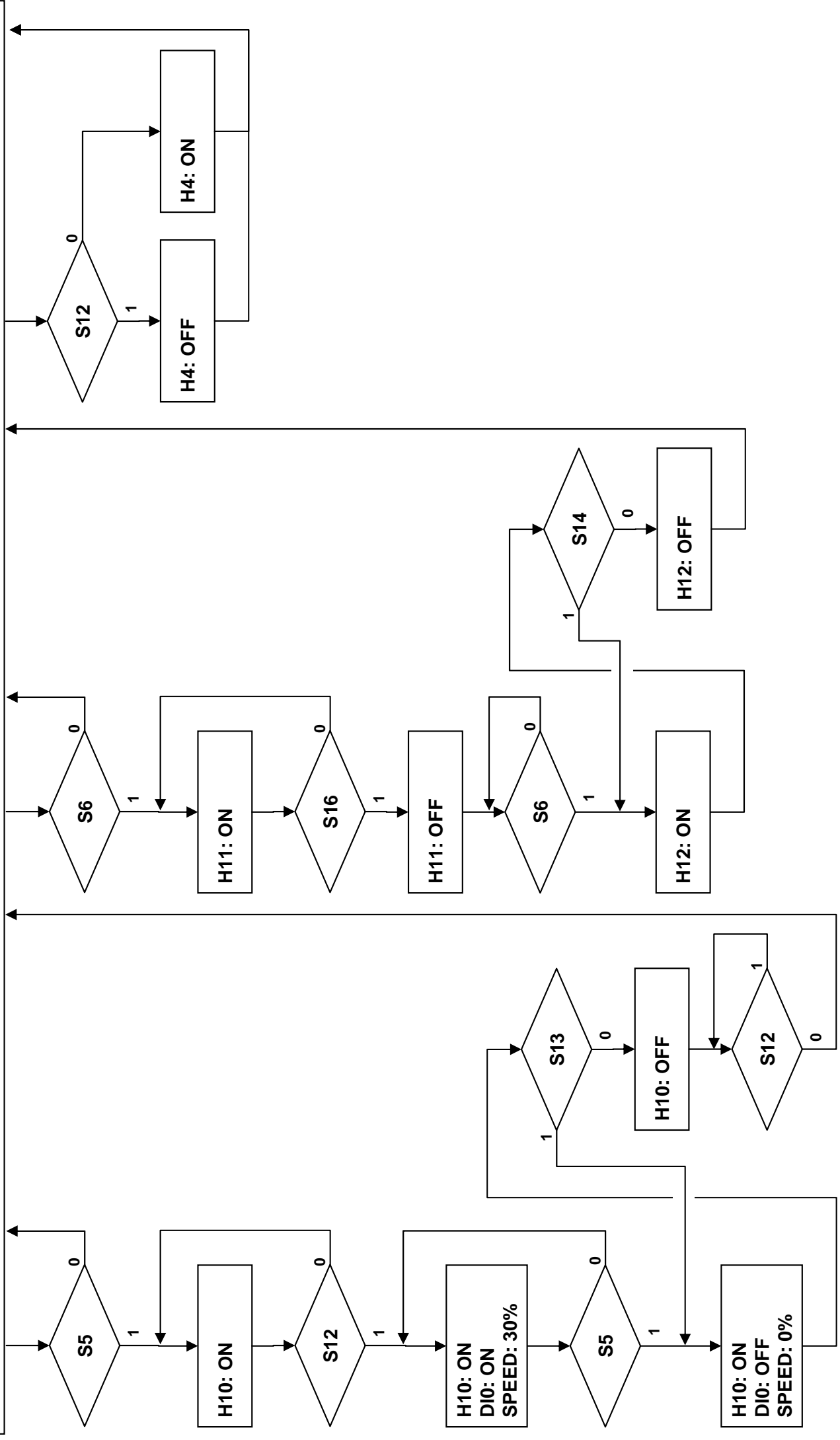
PLC – Function Description

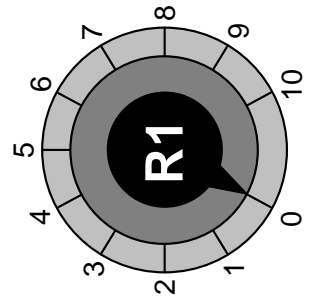
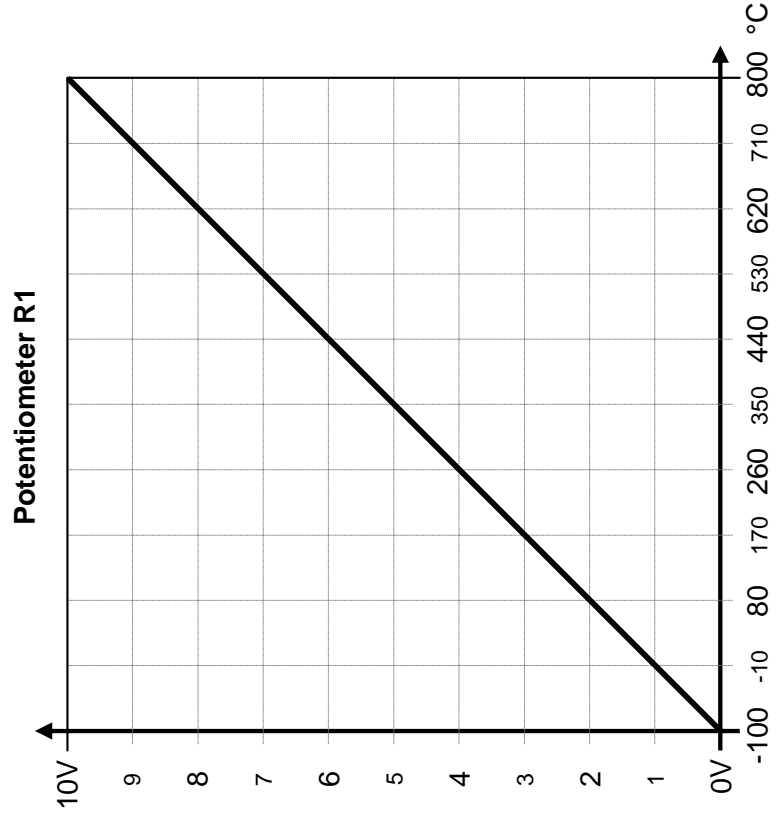
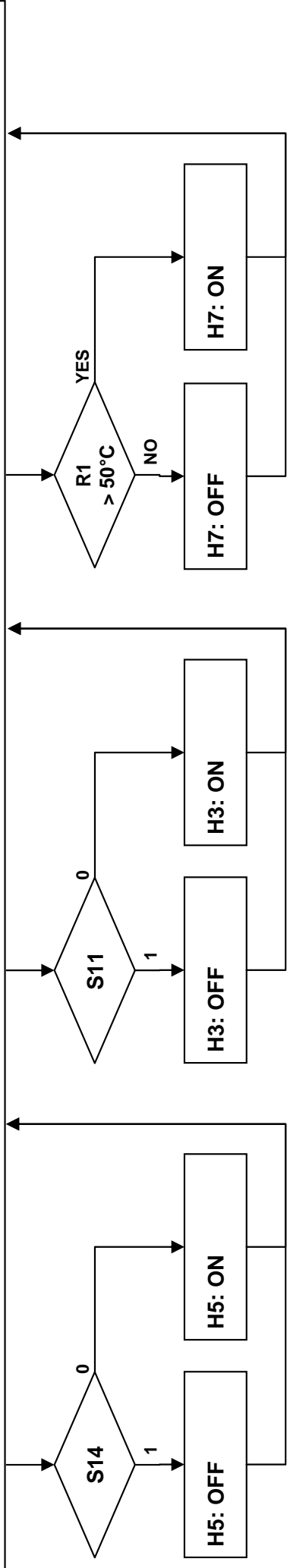
Power On



manual mode







automatic mode

2

Page 49

